



Installation Instructions

Sink Out of Sight comes in a variety of fashions and **2 sizes: 30" x 20" and 39 1/2" x 20"**. They can be sized to fit a variety of sink sizes that are charted below.

30" x 20" FITS:

- 30" x 18"
- 30" x 16"
- 28" x 20"
- 28" x 18"
- 28" x 16"
- 26" x 20"
- 26" x 18"
- 26" x 16"

39 1/2" x 20" FITS:

- 39 1/2" x 18"
- 39 1/2" x 16"
- 37 1/2" x 20"
- 37 1/2" x 18"
- 37 1/2" x 16"
- 35" x 20"
- 35" x 18"
- 35" x 16"

Care Instructions:

Handwash or put in dishwasher. Withstands high temperatures of boiling water. Do NOT bleach.

Warning:

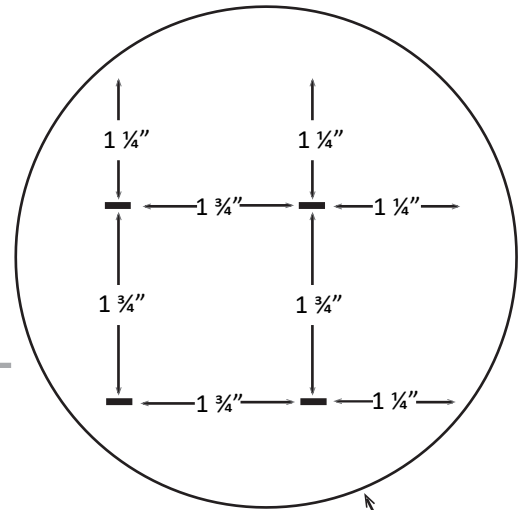
Do NOT use as a food strainer. Not meant to be in contact with edible food. **Keep small parts away from children. CHOKING HAZARD.** Plastic bag is not a toy.

Please Note:

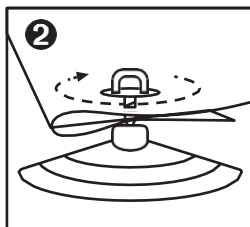
Each screen has slits in the middle to allow debris to pass through.

View instructional video:

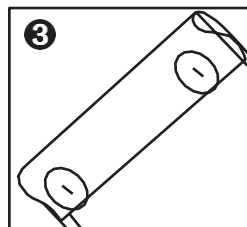
(Scan QR code or visit bit.ly/installcover)



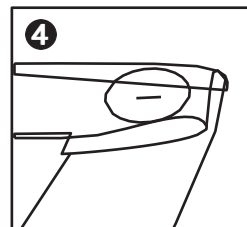
① Each Sink Out of Sight cover has 4 slits in each of the 4 corners, allowing you to custom size it to fit a variety of sink openings. You can pull on the fabric a little to find the slits. (Slits are located 1 1/4" from corner edges.)



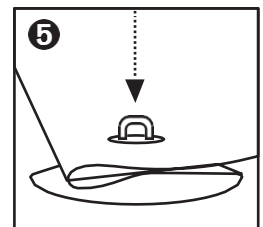
② If cover is too large, fold fabric and line up slits. Align suction cup under fabric. Push screw through slits from top and screw into suction cup to secure the smaller size. (Example folded once at outer slit.)



③ Repeat at opposite corner. (Example folded once in 2 corners.)



④ For smaller sinks, fold over twice, then attach suction cup. (Example folded twice in 1 corner.)



⑤ Press suction cups down onto countertop to secure cover over your sink. Keep suction cups and counter surface clean for suction cups to properly adhere.

